

mapesen

XVR I DIY Camera Kit
Quick User Manual

www.mapesen.com

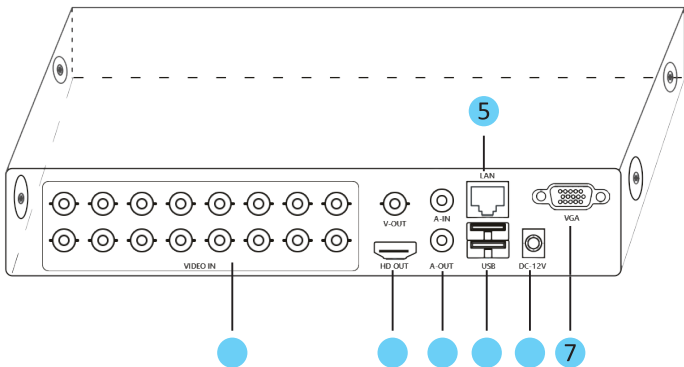
1. Statement

Thank you purchasing our products, if you have any questions or needs, please contact us.

This manual applies to coaxial HD disk recorders. If there is any discrepancy between the description of the product in the manual and the real product, the real product shall prevail.

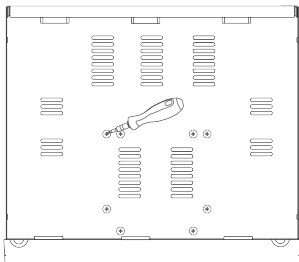
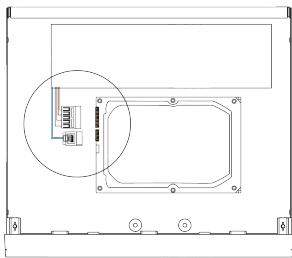
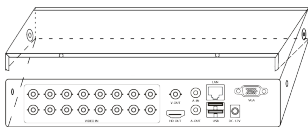
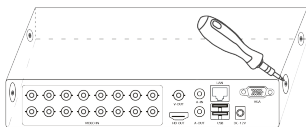
The Company will update the contents of this manual according to the enhancement of product functions, and will periodically update or improve the products or procedures described in this manual. The updated content will be added in the new version of this manual without further notice.

2. XVR Interface Description



S/N	Item	Description
1	BNC	Video input
2	HD-OUT	HDMI video output connector
3	AV	Audio input/output
4	USB	USB ports for additional devices such as USB mouse, U disk
5	LAN	Connect to a LAN or external network
6	POWER	12V DC power supply
7	VGA	DB9 connector for VGA output

3. Install HDD to XVR



(1) Unfastening the screws on the side panel. and Remove the cover from the XVR.

(2) Connect the data cable and power cable to HDD.

(3) Fasten the screws on the bottom to fix the HDD.

(4) Re-install the cover of the XVR and fasten screws.

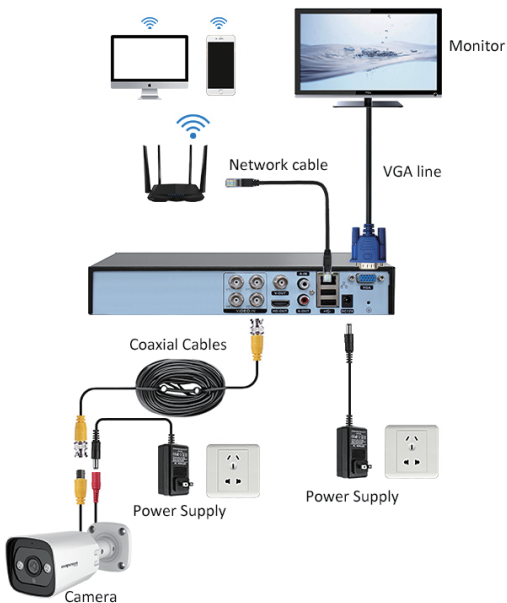
Note:

1. HDD should be installed before the XVR power on.

2. The maximum of hard disk capacity is 8TB.

4. Cable Connection

4.1. Conventional Coaxial Connection Mode

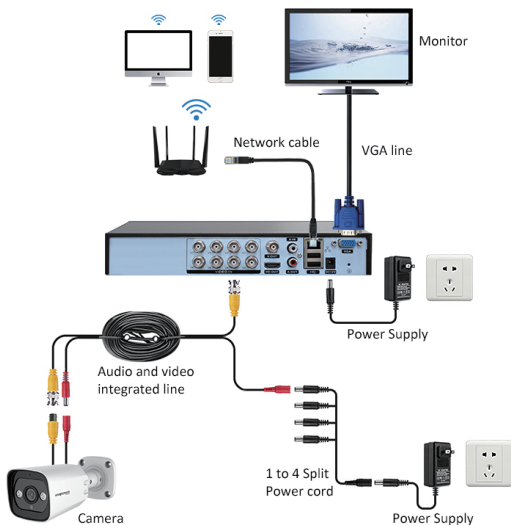


Note:

1. XVR and camera are connected by BNC connector.
2. It is recommended to use high quality wire for transmission.
3. Network connection is required to preview images on your mobile or computer.

4.2. Schematic Diagram of Coaxial Camera Kit Connection

The connection mode of below is suitable for conventional coaxial camera kit and coaxial audio camera kit.



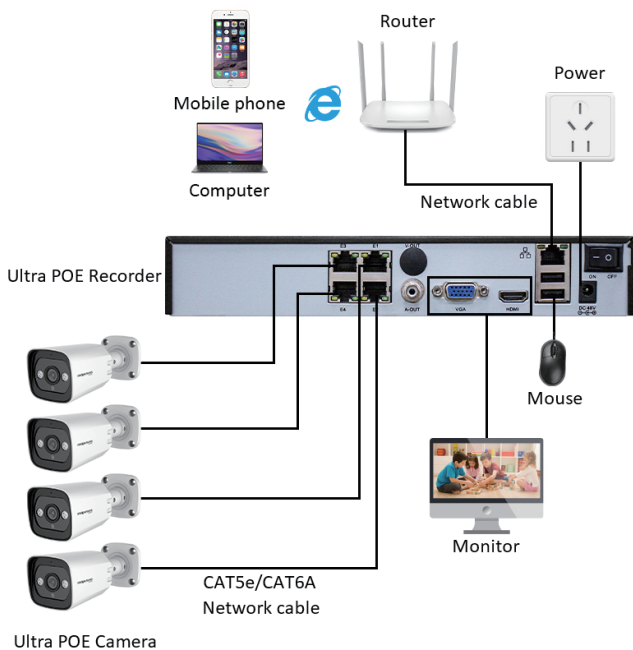
S/N	XVR	Camera	18.3M BNC& Power Cable	1 Split to 4 Power Line	12V 2A Power
4CH	1PC	4PCS	4PCS	1PC	2PCS
8CH	1PC	8PCS	8PCS	2PCS	3PCS

Note:

1. By using a DC12V2A power adaptor to power 4 cameras through a 1 to 4 power splitter cable
2. Network connection is required to preview images on your mobile or computer.

4.3. Ultra POE Kit Connection Schematic

Connect the Ultra POE Recorder to the power supply, and connect the Ultra POE camera directly to the power port of the host with the connection cable to get out of the picture, as shown in the picture:



S\N	Ultra POE Recorder	Ultra POE Camera	52V Power Supply	15M Network Cable
4CH	1PC	4PCS	1PC	4PCS
8CH	1PC	8PCS	1PC	8PCS

5. Local Operation

5.1. Turn on

Plug the power supply and turn on the power supply switch. Power supply indicator light shining indicates turning on the video recorder. After the startup you will hear a beep. The default setting of video output is multiple-window output mode.

Note: 4/8/16CH XVR no switch by default, power on can be started

5.2. Turn off

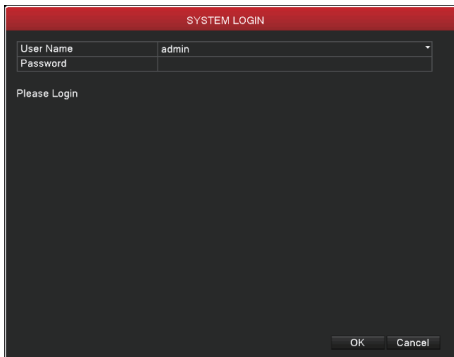
There are two methods to turn off the DVR. Entering [main menu] and choosing [turn off] in the [turn off the system] option is called soft switch. Pressing the power supply switch is called hard switch.

Note:

The setting information must be saved before replacing the battery otherwise information will lose.

5.3. Log in

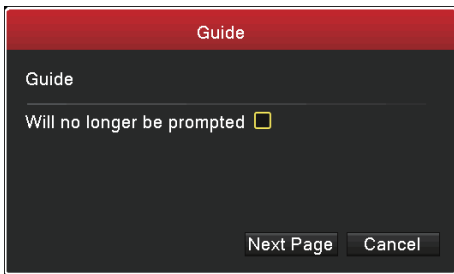
When the DVR boots up, the user must login and the system provides the corresponding functions with the user purview. There are two user settings. The names are admin and guest, and the corresponding passwords are both null. Admin is the super user purview and guest is the common user purview.



Password protection: If the password is continuous wrong seven times, it will alarm and the account will be locked.(After reboot or half an hour, the account will be unlocked automatically.) For your system security, please modify your password after first login.

5.4. Guide

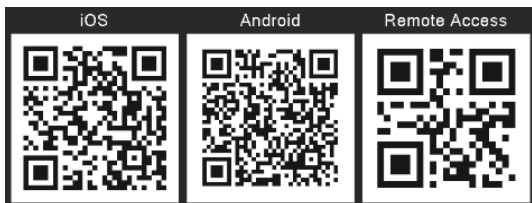
Follow the Guide to configure basic settings when first using.



Do not prompt: Close Guide prompt, then when system reboot, it will no longer pop up.

Then Click “Next Page”, enter into the interface for QR code scanning.

5.4.1. Click 'Cancel' to exit the wizard page.



IOS: For IOS system app software downloading.

Android: For Android system app software downloading.

SN:Find the Device ID

5.4.2. After that, click “Next Page”, Enter the system configuration page.

System Config

Time Zone	[UTC+08:00]Beijing,Urumqi,Taipei,Singapore	▼
NTP	Set	>
System Time	2021 - 03 - 09 18 : 33 : 16	
DST	Set	>
Date Format	YYYY MM DD	▼
Date Separator	-	▼
Time Format	24-HOUR	▼
Language	ENGLISH	▼
HDD Full	Overwrite	▼
DVR No.	0	
Video Standard	PAL	▼
Auto Logout/Min	0	
Machine Name	LocalHost	
Guide	<input checked="" type="checkbox"/>	
Audio Source	Coaxial	▼
	Analog	
	Coaxial	

[Pre Page](#) [Next Page](#)

This page can be modified XVR time, voice, system;

Note:

If you use Coaxial audio you need to set the audio type to "Coaxial";

5.4.3. After that, click "Next Page", enter into the interface for configuring network.

Network Config

Net Card	Wire Netcard ▼
DHCP Enable	<input type="checkbox"/>
IP Address	192 . 168 . 0 . 141
Subnet Mask	255 . 255 . 255 . 0
Gateway	192 . 168 . 0 . 1
Primary DNS	192 . 168 . 0 . 1
Secondary DNS	0 . 0 . 0 . 0

Network Testing

TCP Port	34567
HTTP Port	80
Mobile Port	5800
MTU	1500
HS Download	<input type="checkbox"/>
Transfer Policy	Quality Preferred ▼

Pre Page Next Page

[Net Card] Wire network card

[DHCP Enable] Obtain IP address automatically.

[IP Address] Set the IP address. Default: 192.168.1.18

[Subnet Mask] Set the subnet mask code. Default: 255.255.255.0

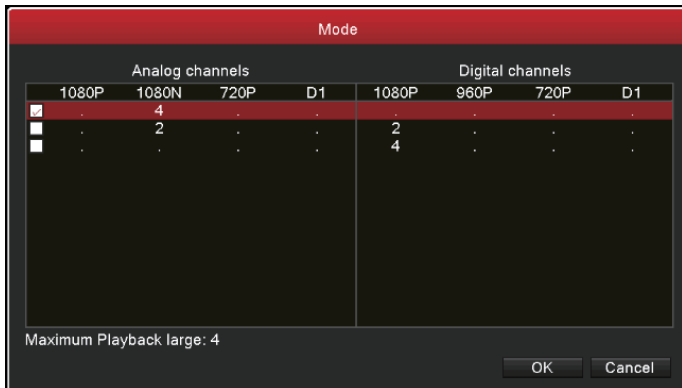
Make the equipment's IP address and the router in the same network segment. For example, the router IP address is 192.168.1.1, and the subnet mask is 255.255.255.0. According to the default setup, generally the default gateway is the router IP address, so enter IP address 192.168.1.18 in the IE browser to achieve visiting;

Note:

Click the right mouse button, choose the main menu- network, you can also enter the network Settings page;

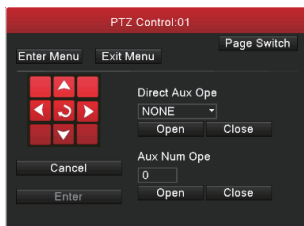
5.5. Product Mode






5 in 1 XVR support three kinds of modes. Full analog channels, analog channel + digital channels, full digital channels. You can choose one of them as you wish.



5.6. Coaxial Control

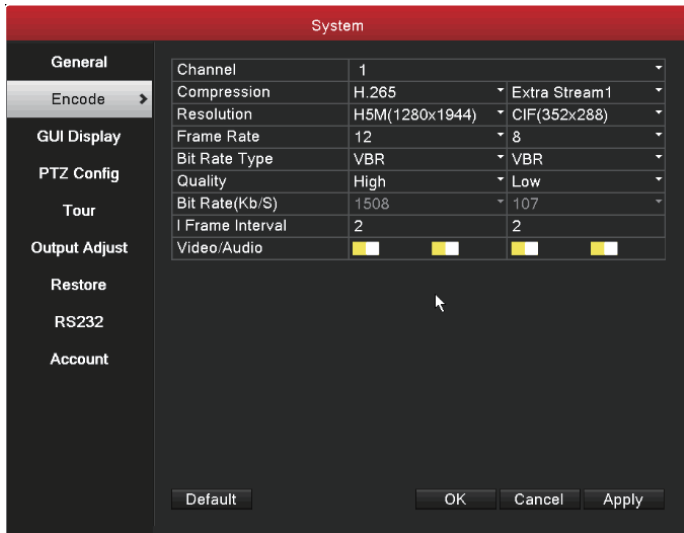
Choose the channel which connect coaxial camera, and then right click to choose Coaxial control menu to enter.



Click  to enter into camera configuration interface . Use  or  to switch between the camera menu. Use  or  choose the specific parameters.

5.7. Encode(Video/Coaxial Audio)

Our device take double code stream technology. Main stream is used for recording local. Extra stream is used for network transmission. So the local storage image high quality and the low bandwidth telecommunication are satisfied at the same time.



The screenshot shows the 'System' configuration interface. On the left is a navigation menu with options: General, Encode (selected), GUI Display, PTZ Config, Tour, Output Adjust, Restore, RS232, and Account. The main area displays the 'Encode' settings for Channel 1. The settings are as follows:

Parameter	Value	Value	Value
Channel	1		
Compression	H.265	Extra Stream 1	
Resolution	H5M(1280x1944)	CIF(352x288)	
Frame Rate	12	8	
Bit Rate Type	VBR	VBR	
Quality	High	Low	
Bit Rate(Kb/S)	1508	107	
I Frame Interval	2	2	
Video/Audio	<input checked="" type="checkbox"/> <input type="checkbox"/>	<input checked="" type="checkbox"/> <input type="checkbox"/>	<input checked="" type="checkbox"/> <input type="checkbox"/>

At the bottom of the interface, there are buttons for 'Default', 'OK', 'Cancel', and 'Apply'.

Note :

1. Different product different encode resolution options. Video/ audio both ticked to record files including video and audio.
2. When using the audio feature, you need to enable the audio options for both primary and secondary streams;
3. To use coaxial audio, select the audio mode as coaxial audio in XVR system Settings, refer to 5.4.2.

5.8. Record

5.8.1. Hard Disk Setting

Format when first log in By [main menu]>[HDD Manage]. There is at least one read-write hard disk.

5.8.2. Record Settings

Channel	1	
Redundancy	<input type="checkbox"/>	
Length/min	60	
Mode	<input checked="" type="radio"/> Schedule <input type="radio"/> Manual <input type="radio"/> Stop	
Day	Fri	
Period	Standard	Motion
00 :00 - 24 :00	<input checked="" type="checkbox"/>	<input checked="" type="checkbox"/>
00 :00 - 24 :00	<input type="checkbox"/>	<input type="checkbox"/>
00 :00 - 24 :00	<input type="checkbox"/>	<input type="checkbox"/>
00 :00 - 24 :00	<input type="checkbox"/>	<input type="checkbox"/>

[Channel] Choose the corresponding channel number to set the channel. Choose the all option to set the entire channels.

[Length] Set the time length of each video file. 60 minutes is default value.

[Prerecord] Record 5 seconds before the action. (time length is decided by the code stream)

[Mode] Set video state: Schedule, manual or stop.

Schedule: Record according to the set video type (Standard,motion) and time section.

Manual: Record no matter the channel in any state.

Stop: Stop recording no matter the channel in any state.

[Day] Set the time section of regular recording, the recording will start only in the set range.

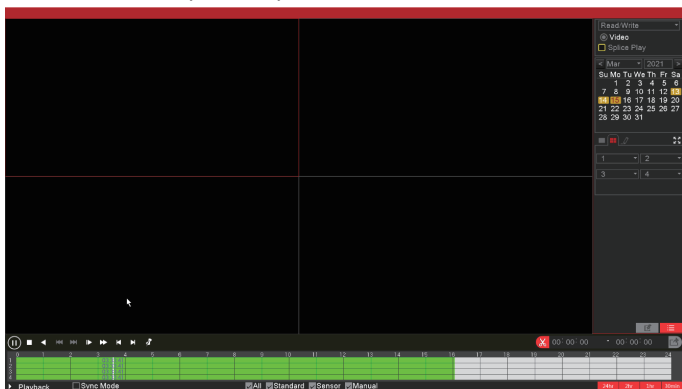
[recording type] set recording type.(Standard,motion)


Regular: Perform the regular recording in the set time section. The video file type is "R".

Detect: Trigger the "motion detect", "camera mask" or "video loss" signal, when above alarm is set as opening recording, the "detection recording" state is on. The video file type is "M"

Alarm: Trigger the external alarm signal in the set time section, and the alarm is set as opening recording, the video file type is "A".

5.8.3. Record Query and Playback



Record querying conditions include: file storing place, record time, record channel, record type (standard, sensor, manual). After chose the querying condition, If files exist, you can see the corresponding color displaying in the time column, Click file list button  ,you can see the files one by one displaying.

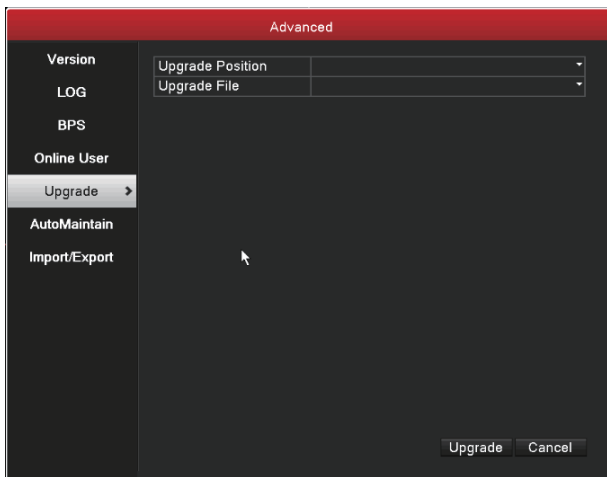
Double click the files you want to playback in the file list or click in the time column to playback.

Sync Mode: Enable sync mode, multiple channels playback at the same time.

Zoom in: Click left mouse to drag out an area, and then move mouse into the area, after that click to enlarge, double click left mouse to exit amplified state.

5.9. Upgrade

Click the right mouse button, choose the main menu- Advanced-upgrade, Firmware updates can be made via USB flash drive on this page.



5.10. Alarm

Take motion detection as example:

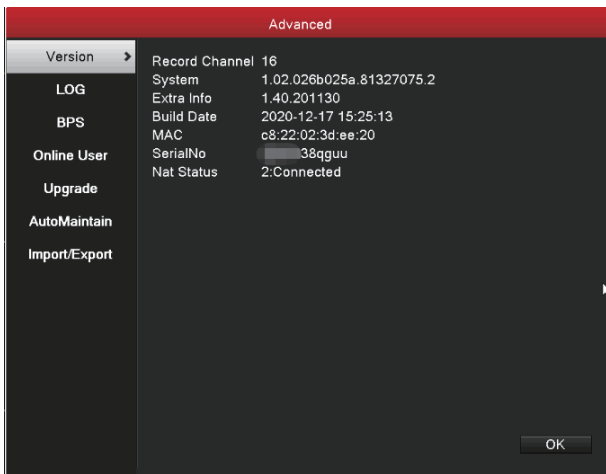
Motion detection setup include 2 parts.

Motion detection alarm setup (switch, sensitivity, detection region, disarm time interval time) , it is how to setup to generate an alarm.

Motion detection Linkage setting (screen prompt, buzzer, alarm output, a round robin) , some Motion detection Linkage setup need combine with other function (such as linkage videos recording, send Email) , that is how to deal with when it is generate an alarm.

5.11. Version

Right click the mouse button,choose the“Main Menu”- “Advanced”, you can see the version info of the device.

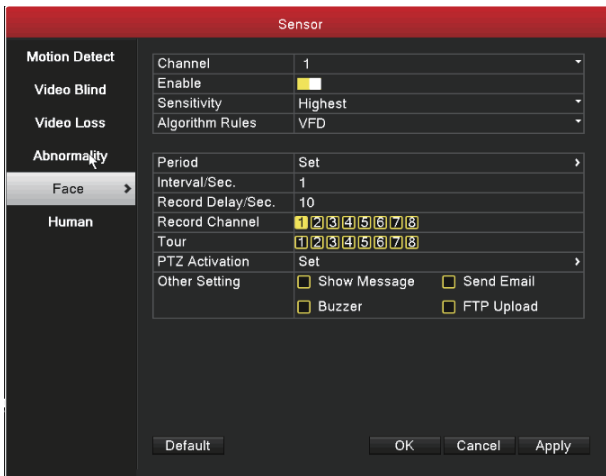


Note: The status of "Nat Status" on this page will only be displayed as "Connected" once the network cable is connected to a properly connected router and the IP address is configured in the network settings of the XVR.

5.12. Face Recognition

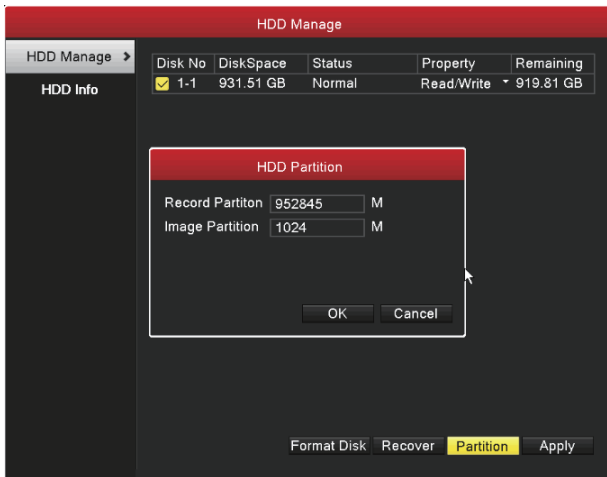
5.12.1. Face Function Setting

Right click the mouse button,choose the “Main Menu”-“Sensor”-“Face”,in this page,you can set the channel,sensitivity,alarm linkage and other parameters to capture the face,and then click “OK” to save the settings.



5.12.2. Set the Face Image Storage Partition

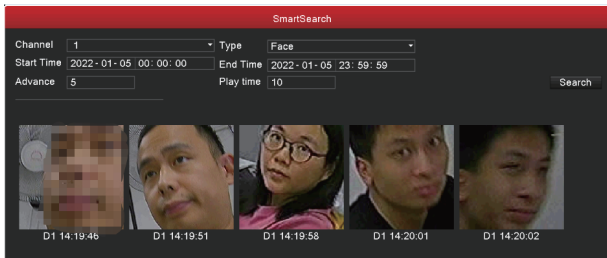
Right click the mouse button,choose the “Main Menu”-“HDD Manage”,check the hard disk to be partitioned, click "Partition", edit the image storage capacity in the pop-up page and click OK to save it, then reboot as prompted.



Note: 1024M is allocated as picture storage space by default, which can be edited and modified manually during partition.

5.12.3. Face Function Playback

Right Click the mouse button, choose the "Main Menu"-"SmartSearch", select the me and date to search on the page, click "search" to see the captured face picture, and double-click the picture below to play the video.



Note:

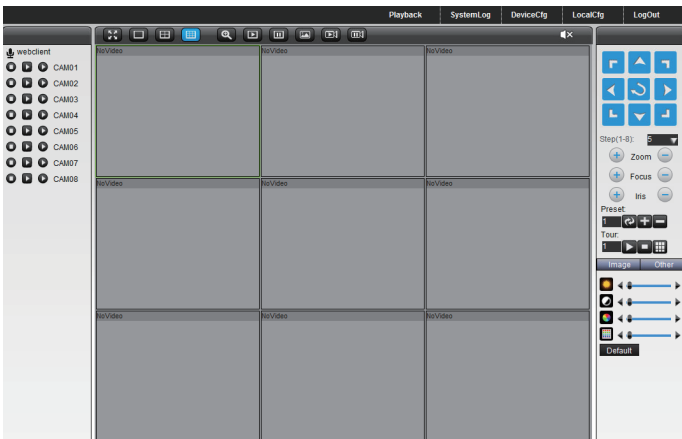
You can only playback the captured face recording video after you have set the picture storage partition in the “HDD Manage”.

6. Local Network Access

After connect network, access device through IE browser

1. Open IE browser, enter device IP in address bar. For example: device IP is 192.168.1.18, then enter http://192.168.1.18 into the address bar to connect.

2. Enter user name and password, default user name is admin, no password. For safe reason, please modify the password. After log in successfully, it will pop up the monitoring interface as below.



Note:

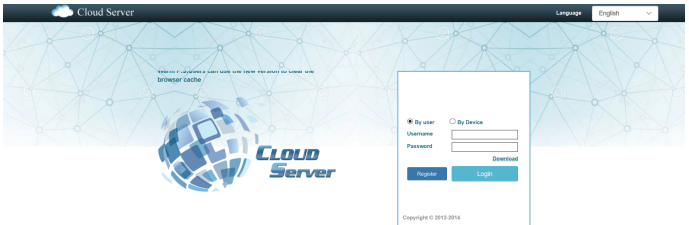
When first log in, you need install ActiveX, IE default stop the ActiveX, so please go to <internet option>--<safe>--<custom level>--<ActiveX>, and enable all ActiveX.

7. Public Network Access

Cloud technology make access device in public network easily and conveniently.

7.1. Access by PC

Open IE browser,enter into <http://www.mp6200.top> to log in Cloud service network website.



7.2. Access by Mobile

1. Download "MP6200" APP

Install the APP on your mobile phone and follow the instructions to register the APP login account.

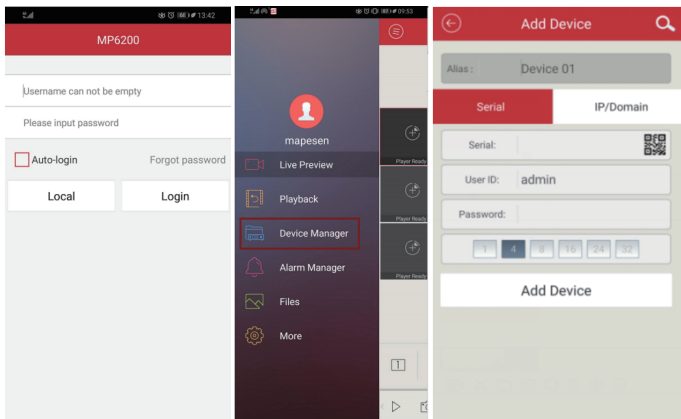


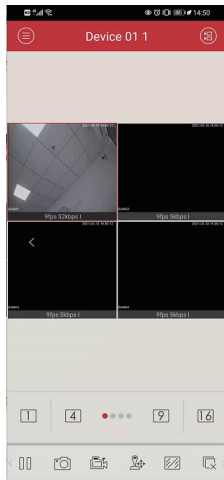
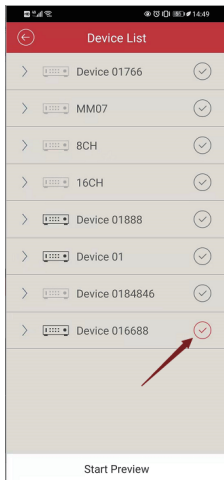
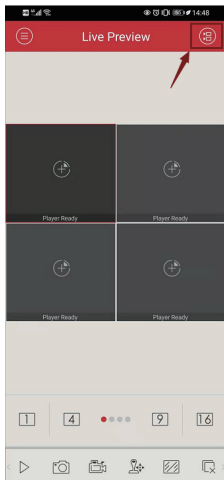
Terminal system: Android, IOS

Downloading place: google play,apple store.

2. Add XVR to the APP Menu

Run the APP on your cell phone, enter the registered account, click "Login"; after login, click the icon on the top left corner, select "Device Management", click the "+" sign, enter the device's Name, serial number (you can scan the serial number QR code on XVR), user name and password, select the number of device channels, click "Add Device" to finish adding. At this time, return to the real-time monitoring page, select the device you want to preview, and click "Start Preview" to preview the image of the device.





Note:

1. XVR remote preview needs to be connected to the external network, connect the network cable on the router to the XVR network port, and open the XVR network settings menu, check "DHCP" and then click Save to exit the network settings page (refer to 5.4.3). Wait for about 1 minute to enter the device version information to check the connection status as "Connected successfully", which means it is connected to the external network.
2. Network Environment: WIFI,4G.

mapesen

Smart City, Smart Guarantee

MAPESEN TECHNOLOGY LIMITED

www.mapesen.com

0086(755)-89345865

info@mapesen.com